

F O R   L E A S E

# 3551 Plano Parkway

The Colony, TX 75056

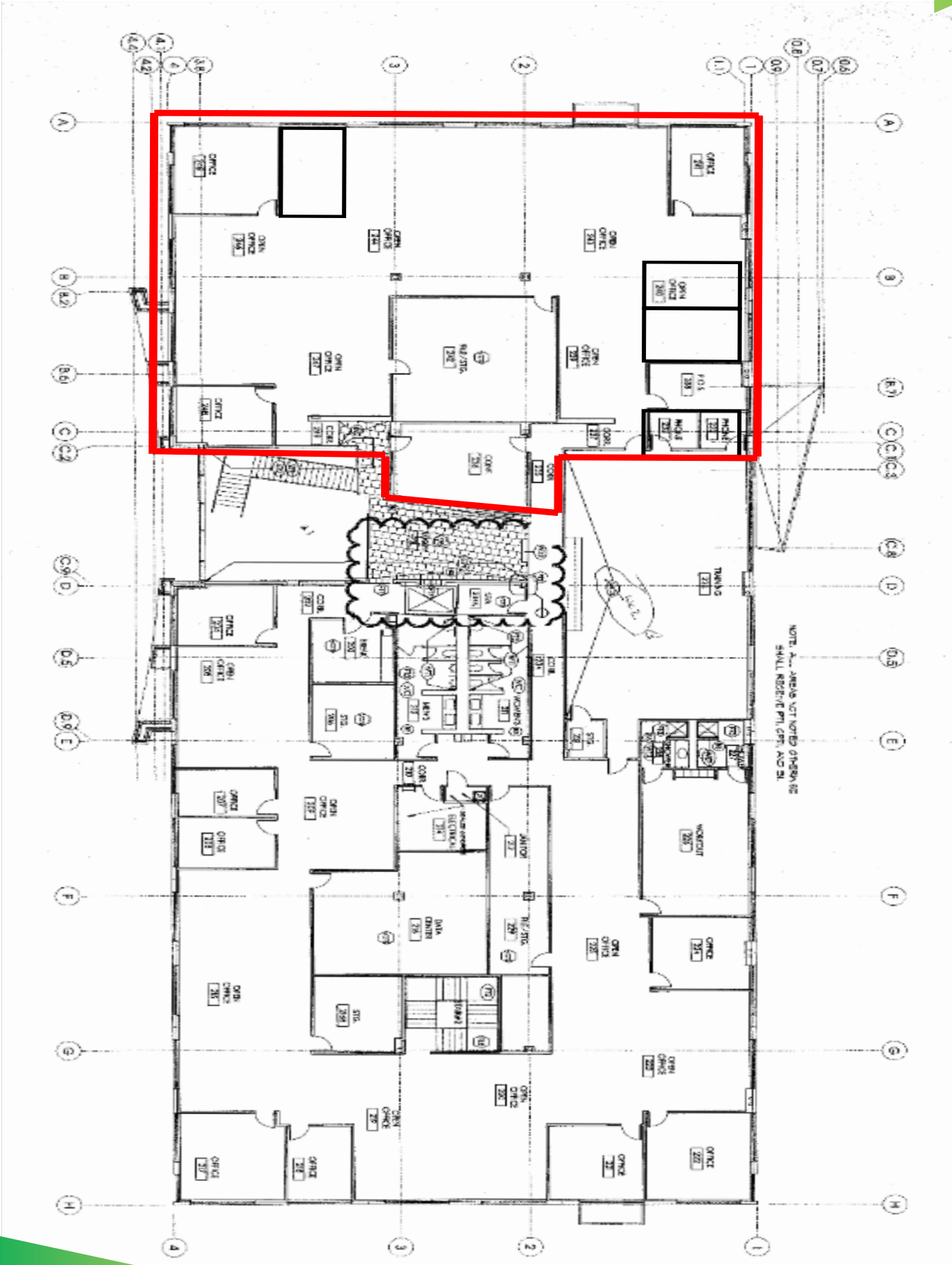


## HIGHLIGHTS

- 8,400 RSF Office
- 2nd Floor Office with Contemporary Finishes & High Ceiling
- 7 Perimeter and Corner Private Offices
- Fully Furnished (Desks & Cubicles)
- Immediate Access to 121 Sam Rayburn Tollway
- Free Surface Parking



FLOOR PLAN



F O R L E A S E

# 3551 Plano Parkway

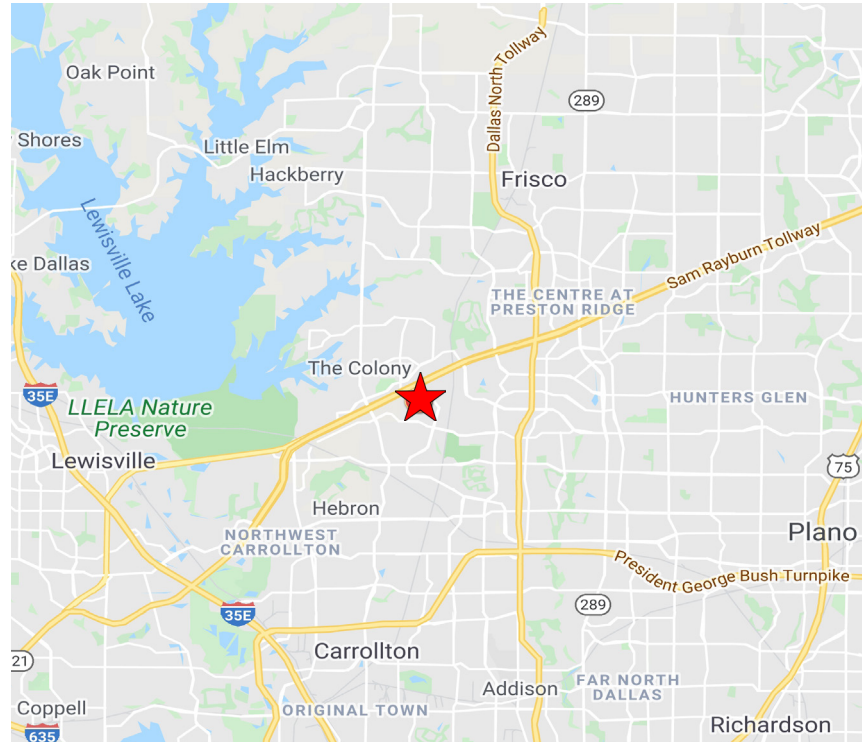
The Colony, TX 75056



FOR LEASE

## 3551 PLANO PARKWAY - AMENITY RICH, PRIME LOCATION

- + Great Access to Hwy. 121 (0.5 mi) and Dallas North Tollway (3.8 mi)
- + Across the street from the Grandscape, a 400-acre, mixed-use real development, featuring 3.9 million square feet of retail, entertainment, residential, dining, hotel, and attractions including:
  - 34 Restaurants, Bars, & Dining Locations
  - 15 Retail Stores & Boutiques
  - 2 Hotels
  - Anchored by The Nebraska Furniture Mart, Scheel's Sporting goods store, Galaxy Theatres, and Andretti Indoor Karting & Games
  - Outdoor Lawn & Stage/Performing Area



CALL FOR LEASE RATE:

LUCY DURBIN

First Vice President  
+1 214.674.2813  
[lucy.durbin@cbre.com](mailto:lucy.durbin@cbre.com)

© 2022 CBRE, Inc. All rights reserved. This information has been obtained from sources believed reliable, but has not been verified for accuracy or completeness. You should conduct a careful, independent investigation of the property and verify all information. Any reliance on this information is solely at your own risk. CBRE and the CBRE logo are service marks of CBRE, Inc. All other marks displayed on this document are the property of their respective owners, and the use of such logos does not imply any affiliation with or endorsement of CBRE. Photos herein are the property of their respective owners. Use of these images without the express written consent of the owner is prohibited.

[www.cbre.us/](http://www.cbre.us/)

**CBRE**